



# YORK SHEET METAL LTD.



## 905-850-3500

## 1-866-326-2459

Compactors and Bi & Tri Sorting Systems to compliment our chutes

### The Most Advanced Sorting Systems for High & Low-Rise Buildings

Simple straight forward operating controls



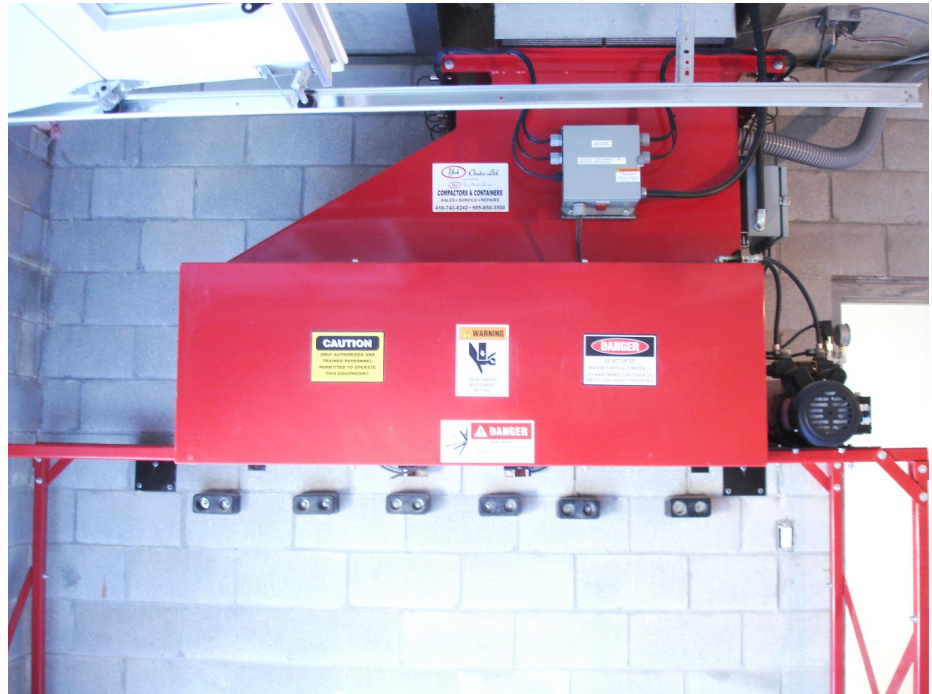
Heavy duty & state of the art design

Your complete waste handling system from one trusted company

Proudly Canadian, Your Apartment Building Specialist Since 1965

New and Retrofit Installs and Repairs 24/7 Service

Preventive Maintenance Program for all Chute & Waste Equipment



York Chutes Ltd., manufacturing specialists since 1965, are dedicated to providing the highest quality equipment for high & low-rise residential buildings conforming to ANSI Z245.2, OSHA, UL & CSA safety guidelines and electrical requirements.

Our state of the art PLC design simplifies use and reduces user caused errors by offering the most effective and efficient performance of any sorting system available.

- ◆ York Chute's Lock-out system reduces the chance of cross contamination
- ◆ Extra heavy duty sorter, designed to withstand impact with ever increasing tower heights
- ◆ Full equipment training
- ◆ Automatic intelligent operation
- ◆ Container full indicators
- ◆ Multi-functioning control panel
- ◆ Computer display Sorter Monitor & Diagnostics
- ◆ Offers greater protection against potential personal injury
- ◆ Onboard diagnostics and detailed trouble-shooting system
- ◆ Sensor detects accumulated chute blockages
- ◆ Optionally, alerts are displayed on Concierge computer

# York Chutes Compactor (YC-COM) and Tri Sorter (YC-3S)

## SORTER STANDARD FEATURES

- PLC controlled hydraulic sorting system
- Intelligent multi-cycle operation
- Sorter Monitor and diagnostics system
- Easy to use, smart keypad on every door
- Multi-function door lock-out system, allows multiple users to access the same path
- State of the art sensors
- Container full indicators
- Push button start for safe start-up
- Large emergency stop button
- Fluid filled pressure gauge

### Potential Detections:

- Blocked chute
- Flap jams
- Motion faults
- Chute door stuck open \*
- Chute door switch or lock problem \*
- Broken/stuck keypad buttons\*

\* exact floor message alert

Conforms to all ANSI Z245.2, OSHA, UL & CSA safety guidelines and electrical requirements

In order to provide the most currently engineered & designed equipment we reserve the right to change specs without notice.

This brochure is intended for information purposes only. Please consult the appropriate qualified professional to determine if this information applies to your circumstances.

## MECHANICAL SPECS

### COMPACTOR

|  |   |
|--|---|
| Charge chamber capacity                            | 0.25 cu yd                                |
| Charge chamber opening                             | 28" x 25"                                 |
| Ram face size                                      | 28" x 12"                                 |
| Ram penetration                                    | 30"                                       |
| Total normal force                                 | 7,100 lbs                                 |
| Total maximum force                                | 8,900 lbs                                 |
| Compaction ratio                                   | 3:1                                       |
| Compaction cycle time                              | 38 seconds                                |
| System normal pressure                             | 1400 psi                                  |
| System maximum pressure                            | 3000 psi                                  |
| Pump maximum capacity                              | 5 gpm                                     |
| Ram cylinder size                                  | 3" x 30"                                  |
| Cylinder type                                      | double lip seals urethane double rod wire |
| Floor and bottom thickness                         | 3/8"                                      |
| Sides and top thickness                            | 1/4"                                      |
| Extension and hopper drop zone thickness           | 1/4"                                      |
| Rubber scraper plate & container attachment hookup |   |
| Time delay photo-eye sensor for automatic cycle    |   |
| Safety interlock door switches                     |   |
| Shipping weight                                    | approx. 1200 lbs                          |

### BI OR TRI SORTER

|                      |                                |
|----------------------|--------------------------------|
| Flap cylinder size   | 1½" min. to 2" dia. bore x 12" |
| Cylinder shaft size  | 1" min. to 1¼" dia.            |
| Flap shaft size      | 1½" min. to 2" dia.            |
| Flap metal thickness | ¼" min. to ½"                  |
| Shipping weight      | 500 to 1500 lbs                |

### HYDRAULIC UNIT

|                   |                   |
|-------------------|-------------------|
| Motor size        | 1 hp to 3 hp      |
| Oil tank capacity | 1.5 gal to 10 gal |
| Shipping weight   | 50 to 200 lbs     |

### ELECTRICAL SPECS

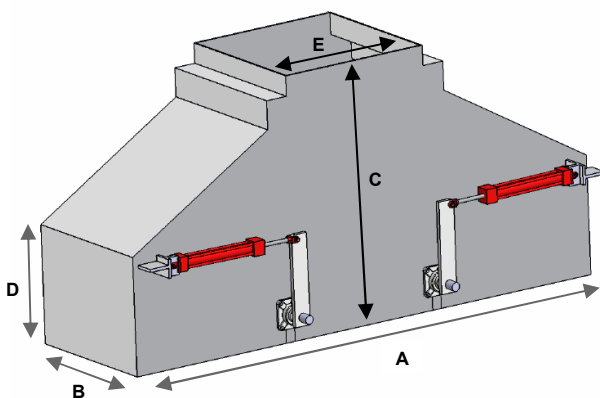
- Main power 208/575V 3 phase 60 Hz
- Control panel 110VAC & 24VDC
- Chute door control voltage 24VDC

### OPTIONAL FEATURES

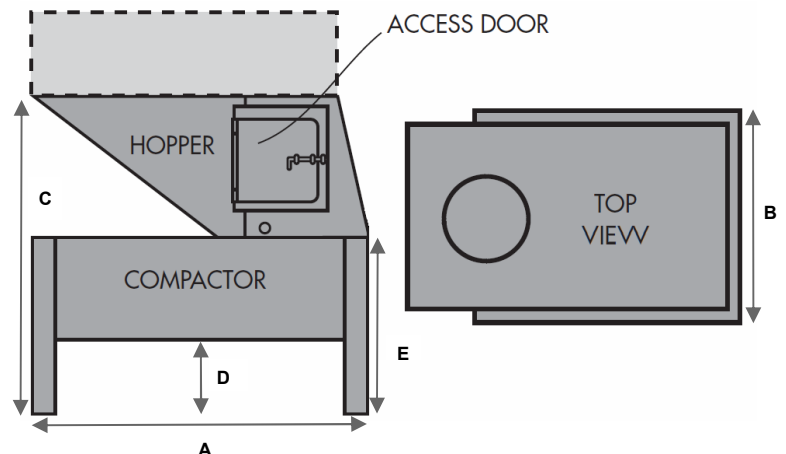
- Concierge sorter monitoring system
- Odour control system
- Rodent control system
- Fly zapper
- Extra heavy duty impact zone
- Heavy duty diverter flaps
- Noise reduction coating

| DIMENSIONS | A     | B   | C     | D     | E     |
|------------|-------|-----|-------|-------|-------|
| YC-3S      | 91.5" | 27" | 45.5" | 20.5" | 27.5" |
| YC-COM     | 72"   | 28" | 70"   | 12"   | 37"   |

Tri-Sorter Chassis - YC-3S



Standard Apartment Compactor - YC-COM



227 Westcreek Dr., Woodbridge, Ontario, Canada, L4L 9T7

Tel: 905-850-3500 • Toronto Tel: 416-742-8242 • Toll Free: 1-866-326-2459 • Fax: 905-850-0573

[www.yorkchutes.com](http://www.yorkchutes.com)